

The Power to Surprise

Kia is the newest and most exciting force of change in the automotive world and we are ready to change the way you feel and think about driving. More than just a promise, we are committed to making driving a true pleasure for customers across the globe. With youthful and dynamic styling and the latest in advanced technologies, Kia cars are turning heads the world over with the power to surprise. From the Picanto to the Mohave, Kia offers a full lineup of sedans, SUVs and MPVs that are not only practical and stylish but downright exhilarating to drive. Keep your eyes on Kia because our best has yet to come.

About Kia Motors Corporation

Kia Motors Corporation (www.kia.com) - a maker of quality vehicles for the young-at-heart - was founded in 1944 and is Korea's oldest manufacturer of motor vehicles. Over 3 million Kia vehicles a year are produced at 14 manufacturing and assembly operations in five countries which are then sold and serviced through a network of distributors and dealers covering around 180 countries. Kia today has over 51,000 employees worldwide and annual revenues of over US\$45 billion. It is the major sponsor of the Australian Open and an official automotive partner of FIFA - the governing body of the FIFA World Cup™. Kia Motors Corporation's brand slogan - "The Power to Surprise" - represents the company's global commitment to surprise the world by providing exciting and inspiring experiences that go beyond expectations.



<http://www.facebook.com/Kiamotorsworldwide>



<https://www.instagram.com/kiamotorsworldwide/>



<http://www.youtube.com/KiaBUZZ>



<http://Kia-buzz.com>



Kia Motors Corporation
12 Heolleung-ro, Seocho-gu, Seoul, 137-938, Korea

www.kia.com
1708-JS-SW/EU-LHD



The Power to Surprise



MAJOR SPONSOR



Official Partner

The new Kia

stinger

CLASSIC SPIRIT TUNED FOR MODERN TIMES

Kia's first-ever rear-wheel-drive sports sedan, the all-new turbocharged Stinger, is a five-door fastback that echoes the style and substance of gran turismo legends with its long hood, muscular haunches and stylish spoked wheels, along with serious game-changing performance figures. The Stinger offers an extended wheelbase for maximum cabin space, optional all-wheel-drive, and driver assistance and entertainment technologies unimaginable during the glory days of muscle cars.





A DREAM CAR FOR RATIONAL PEOPLE

Are you torn between exciting, provocative cars that you've dreamt about from an early age and sensible cars that are a better fit for your everyday life? Rarely has a new car brought both of these extremes together so seamlessly. The Stinger is a car you can dream about all night, then hop into every morning for a drive that is sure to wake up your senses.

PERFORMANCE-BASED SENSATIONS

Performance sedans have an illustrious rear-wheel drive history. Apply the latest technologies and materials to this tradition, and the result is a remarkably responsive, dynamic and rewarding driving experience. The Stinger reflects a deep commitment to capturing the distinctive feel of classic sport sedans. Take a long, meandering ride in the Stinger and see how the right balance of passion and technology can reinvigorate your daily drive.



AN OBSESSION WITH THE DETAILS

All it takes is a single glance to realize that you're in the presence of something more than an attractive sedan. From the wheels and brake calipers to the mirrors, air intakes and the tiger nose grille, the Stinger strikes a chord with enthusiasts everywhere. It is a true celebration of the rear-wheel drive classics of yesteryear, enriched with the latest performance technology.

The Stinger wears its obsessions proudly.



Dark chrome finished outside mirrors The tone of the high-quality side mirror finish puts luxury cars on notice that serious competition has arrived.

Rear LED combination lamps & quad oval exhaust pipes Modern, stylish LED lights illuminate instantaneously with a bright, even glow, while four oval exhaust tips announce that the Stinger is a bona fide performer.

Dark chrome finished trim & 19" alloy wheels The dark finish of the trim's chrome conveys refined, performance-oriented luxury, while aggressive 19" alloy wheels speak to the deep gran turismo sentiments of drivers everywhere.

18" disc brakes with Brembo® red brake calipers On GT models, the standard, provocative red Brembo® brake calipers make the Stinger look startlingly fast, even at rest.

Full LED headlamps Amid classic performance-car styling cues, full-LED headlamps (standard on GT models) demonstrate that Stinger uses the best technology where it makes sense while still retaining that authentic old-school look.



CLASSIC SIMPLICITY FOR PASSIONATE DRIVERS



From the low-slung driver's seat to intriguing details like the circular, aircraft-inspired air vents, Stinger's cockpit design draws heavily on classic sport sedans. Crucial information appears on a tidy supervision cluster flanked by the tachometer and speedometer, as well as through the optional Head-Up Display on the windshield. Secondary information appears on an optional 8-inch "floating" navigation display.

Driver and passenger power seats An 8-way power driver seat and 6-way manual front-passenger seat are standard. Driver seat options include 4-way mechanical lumbar support, a thigh extension and 4-way Air Cell Lumbar Support with bolster adjustment. Front-passenger options include an 8-way power seat and 4-way mechanical lumbar adjustment.



WHERE PERSONAL SPACE IS PARAMOUNT



Inside, the Stinger feels sporty, substantial and uncluttered. It's also spacious, particularly in the rear, thanks to its long wheelbase. Interior treatments include soft, luxurious Nappa leather seats on the GT version, while all models feature firm front and rear seats and bolsters.

Expansive 2nd row roominess The Stinger offers superior headroom, shoulder room and legroom to its major competitors, providing ample space for two or three passengers to sit comfortably and stretch out.

Wide sunroof Ready to feel the wind in your hair? A wide, tilting and gliding, one-touch sunroof is available on all trim levels. With the press of a finger, it lets in far more sunlight and fresh air than a conventional sunroof.



CONFIDENCE GROUNDED IN PHYSICS

The gran turismo experience is about more than just acceleration and fun cornering. The Stinger delivers confidence-inspiring rear-wheel-drive performance that is backed up by engineering refinements throughout the vehicle, from weight balance and chassis management to aerodynamics and engine- and safety-sensor ECU processing.

That confidence grows deeper with every drive.



8-speed automatic transmission

Smooth shifts are what you'll notice first with the 8-speed rear-wheel drive automatic transmission. Its algorithms ensure quick and seamless gear changes while helping to maximize fuel efficiency. A centrifugal pendulum absorber applied to the 2.0 T-GDI and 2.2 VGT diesel engines limits noise and vibration when accelerating at low revs.

INGENUITY THAT PACKS A PUNCH

Stinger powertrains set a higher standard for longitudinal, rear-wheel-drive orientation, leveraging technology to achieve remarkable combustion efficiency. Each powerplant is designed to offer the thrilling feel of rear-wheel propulsion when you step on the accelerator, even at low engine speeds. An 8-speed automatic transmission redefines smoothness, while the Stinger also offers a game-changing twist on gran turismo traditions with optional road-taming all-wheel drive.



0-100 km/h*

Max. speed*

Max. power*

* Lambda 3.3 T-GDI engine

Lambda 3.3 T-GDI engine A twin turbocharger helps this top-of-the-line V-6 engine achieve considerable torque over a broad rpm range. The exhaust manifold is integrated with the cylinder head for added power, and an electronic thermostat helps provide precise temperature control.

Theta II 2.0 T-GDI engine A twin-scroll turbocharger boosts low- to mid-rev efficiency while newly applied technologies provide phenomenal combustion efficiency. The engine produces maximum power output of 255 ps at 6,200 rpm and maximum torque output of 353 Nm from 1,400 to 4,000 rpm.

R 2.2 VGT diesel engine This state-of-the-art diesel powerplant offers improved efficiency and reduced low-end noise and vibration. It is capable of producing 200 ps at 3,800 rpm with maximum torque output of 440 Nm across a wide 1,750-2,750 rpm range.



► Front differential

On AWD models, the front differential allows the front wheels to turn at different speeds when cornering, even when they are propelling the vehicle.

► Rack-mounted motor driven power steering (R-MDPS)

R-MDPS offers the driver quicker responsiveness thanks to the mounting of the electric motor directly on the steering rack. Steering boost is adjusted indirectly through the five drive modes.

► 19-inch summer tires

Standard on the GT trim and an option on the GT Line trim, low-profile 19-inch tires offer an outstanding blend of dry and wet street traction and handling.

► Rear differential

For rear-wheel drive models, an optional mechanical limited-slip differential provides agility during high-speed cornering.

► Electronically-controlled transfer case

On AWD models, an ECU analyzes road conditions for resistance at each wheel, then instructs the transfer case to distribute the optimal amount of power from the transmission to each of the axles.

► Electronically-controlled suspension (ECS)

ECS uses multiple sensors and an ECU to evaluate vehicle speed, road conditions, cornering, stopping requirements and acceleration. Using this data, ECS regulates vertical suspension travel to optimize road feel in real time.



INTELLIGENT DISTRIBUTION OF POWER

All-wheel drive (AWD) Stinger models combine thrilling rear-drive motoring with all the rough-road and inclement-weather benefits of AWD. That means confident, carefree driving in almost any condition, including snowy, icy and wet roads. The intelligent control system features Dynamic Torque Vectoring Control which addresses any traction or stability requirements by instantaneously adapting to road-surface changes and sending torque to the front wheels as needed.

AWD

Cornering



When cornering, the AWD system maintains stability by sending more torque to the outside rear wheel as the Stinger moves through the turn for improved control.

Slippery Roads



On slippery surfaces, the AWD system sends torque to the wheels with the most traction and shifts it away from wheels that are spinning.

Highway Cruising



On smooth highways, the ECU shifts the drive bias to rear-wheel drive, offering the driver classic RWD behavior and response.

Lane Changes



The intelligent control unit distributes torque to the inside rear wheel and immediately responds to small changes in torque requirements while making a lane change.

Electronic Stability Control (ESC) ESC ensures optimal braking performance and directional control by automatically delivering the right amount of braking force to each wheel based on evaluation of engine torque and driving circumstances.

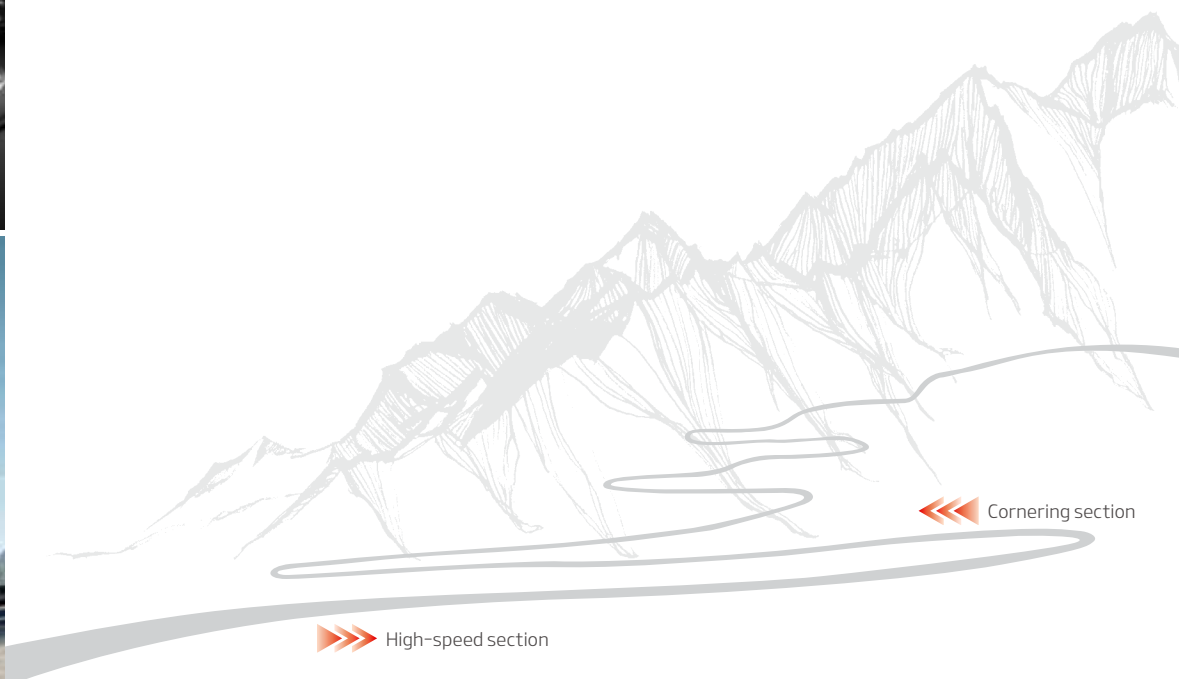
Drive Mode Select (DMS) The Stinger's DMS includes five modes, accessible from a dial behind the shift lever, that change the driving characteristics by automatically adjusting how the engine, transmission, suspension, steering and AWD operate, while even altering the engine sound.





SUPPORTIVE BUT NOT OVERBEARING

The Stinger offers substantial stability management for a sports sedan, while giving the driver more choices as to how much or how little control to leave to the ECU. Drivers can choose from five drive modes, each with its own coordinated combination of dynamic characteristics. There is even a Launch Control mode that momentarily suspends ESC to ensure rapid acceleration with minimal wheel slip and maximum torque control.





Smart Power Trunk

It's a breeze loading cargo even when your hands are full. The lid of the Smart Power Trunk opens automatically within three seconds when you stand close to the rear of the vehicle with the key in your possession.



A WORLD OF POSSIBILITIES



The Stinger puts your life in motion in countless new ways. Its five-door fastback layout with 406 liters of cargo capacity means there's plenty of easily accessible space to bring along everything you'll need, even for a long road trip. The rear hatch lifts to reveal a broad opening, making it easier to load wide objects or arrange cargo. The rear seatbacks split and fold 60:40, giving you several options for accommodating longer items.

406ℓ cargo capacity



INTUITIVE PROBLEM-SOLVING

DRIVE WISE is Kia's ADAS (Advanced Driver Assistance System) technology initiative dedicated to delivering driving pleasure and the utmost in occupant and pedestrian safety by taking over the tedious and complex tasks traditionally left to drivers. The Stinger offers many DRIVE WISE assistance technologies that use advanced sensor and processing technology to help make driving as safe and convenient as possible.



Safety
DRIVE WISE recognizes surrounding risk factors at an early stage. Its intrinsic alarm system is designed to improve safety by preemptively reducing the risk of accidents through timely interventions.

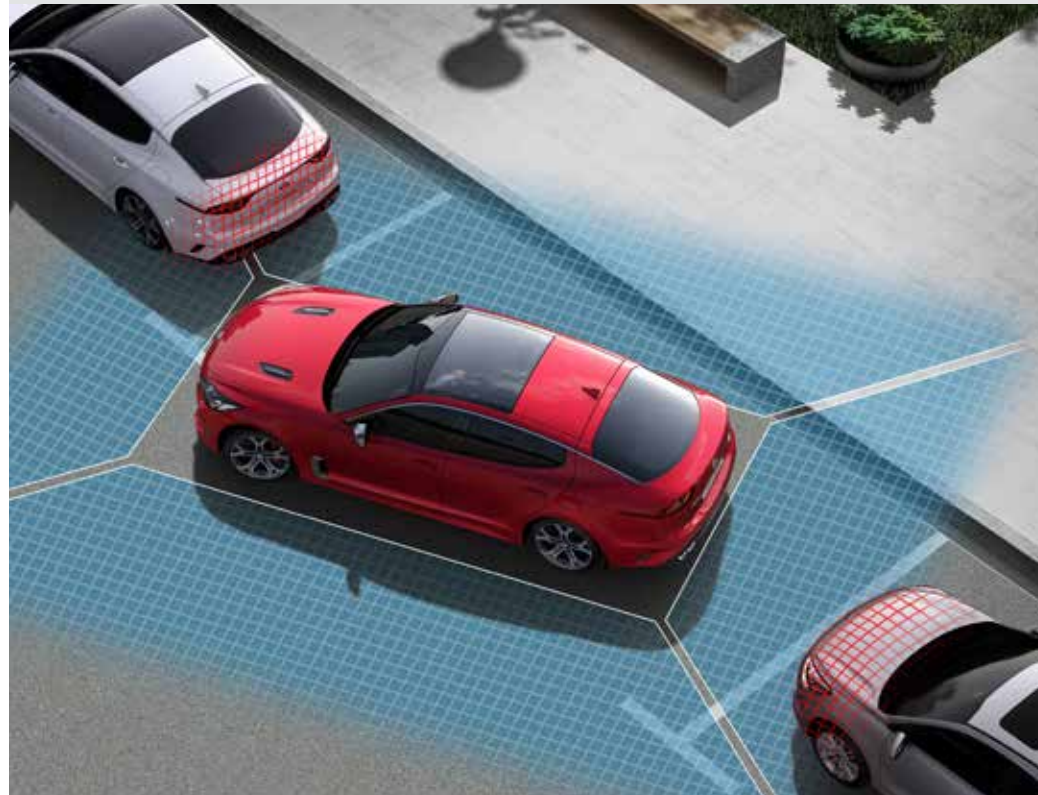


Convenience
DRIVE WISE provides customized information based on analysis of surroundings and the driver's actions. The goal is to prevent undesirable operation, guarantee the driver's autonomy, and maximize convenience.



Efficiency
DRIVE WISE is dedicated to supporting more efficient driving in ways that respect the driver's time and economic interests.

Parking Assist Systems



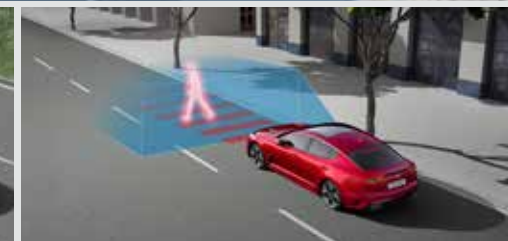
Around View Monitor (AVM) with Parking Guidance

This intuitive system combines four wide-angle images from cameras at the front, rear and sides of the vehicle to give you a comprehensive bird's eye view of your surroundings while parking or moving at speeds below 20 km/h.

Parking Distance Warning-Forward (PDW-F)

To help you park safely and confidently, PDW-F uses ultrasonic sensors mounted on the front and rear bumpers to warn of any obstacles. These warnings can help you position the wheels properly when maneuvering the Stinger into tight spaces.

Driving Assist Systems

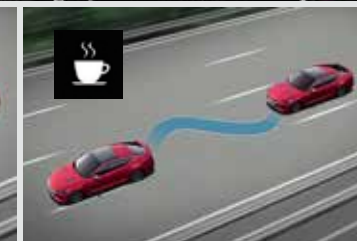
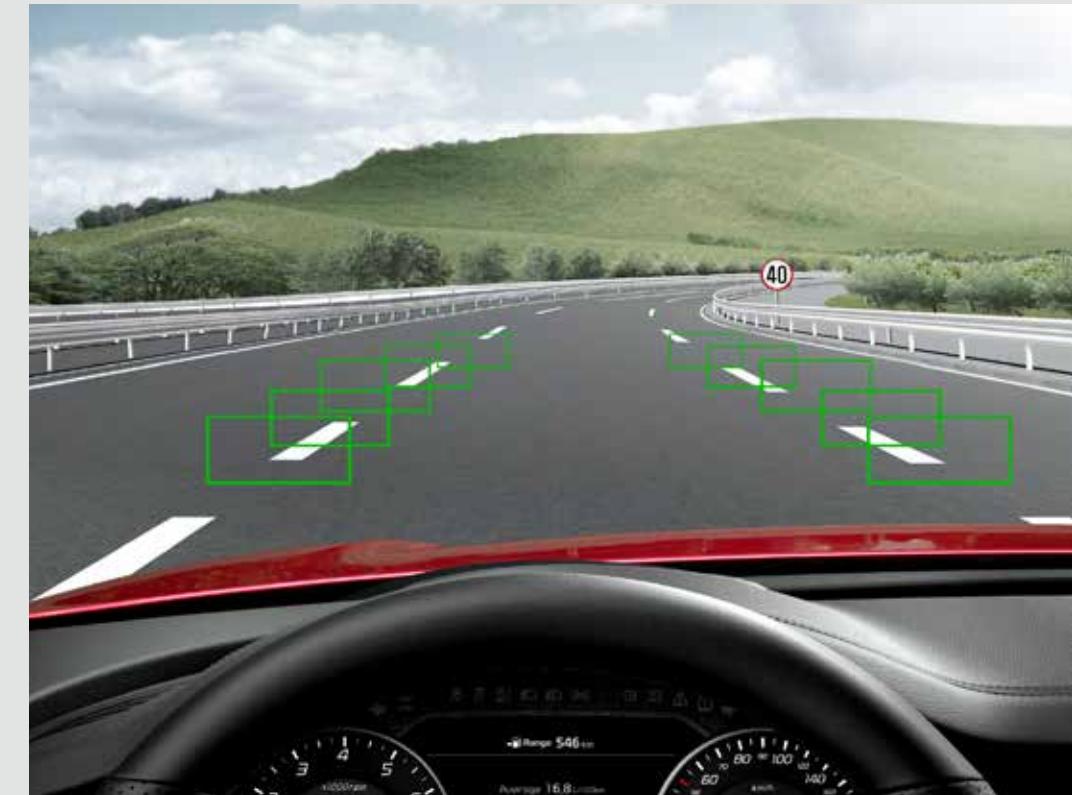


Smart Cruise Control with Stop & Go (SCC w/ S&G)

This system uses a radar sensor at the front of the vehicle to monitor the distance to the vehicle ahead. It will maintain your choice of four preset following distances by applying the brakes, or even stopping the car if necessary.

Forward Collision-Avoidance Assist (FCA)

FCA watches out for vehicles and pedestrians by evaluating camera and radar data. If it detects a collision risk, it warns the driver, and can even apply the brakes automatically in order to help avert a collision or minimize potential damage.



Lane Keeping Assist-Line (LKA-L)

Ingenious LKA-L monitors how well you're staying in your lane and can actually step in and provide corrective steering input in order to keep you from inadvertently crossing over into other lanes of traffic.

Driver Attention Warning (DAW)

DAW analyzes your driving based on how well you're staying in your lane of traffic. It provides a warning if it senses driver drowsiness or lack of attention at the wheel.

Intelligent Speed Limit Warning (ISLW)

Using a camera to recognize speed limit signs and GPS data for the road you're on, ISLW clearly displays the speed limit on the supervision cluster.

► **Tailgate Opening Fortifications**

Stronger box-section joints between the rear quarter panels, back panel and hatch rim improve stiffness.

► **Quarter Panel Reinforcement Connections**

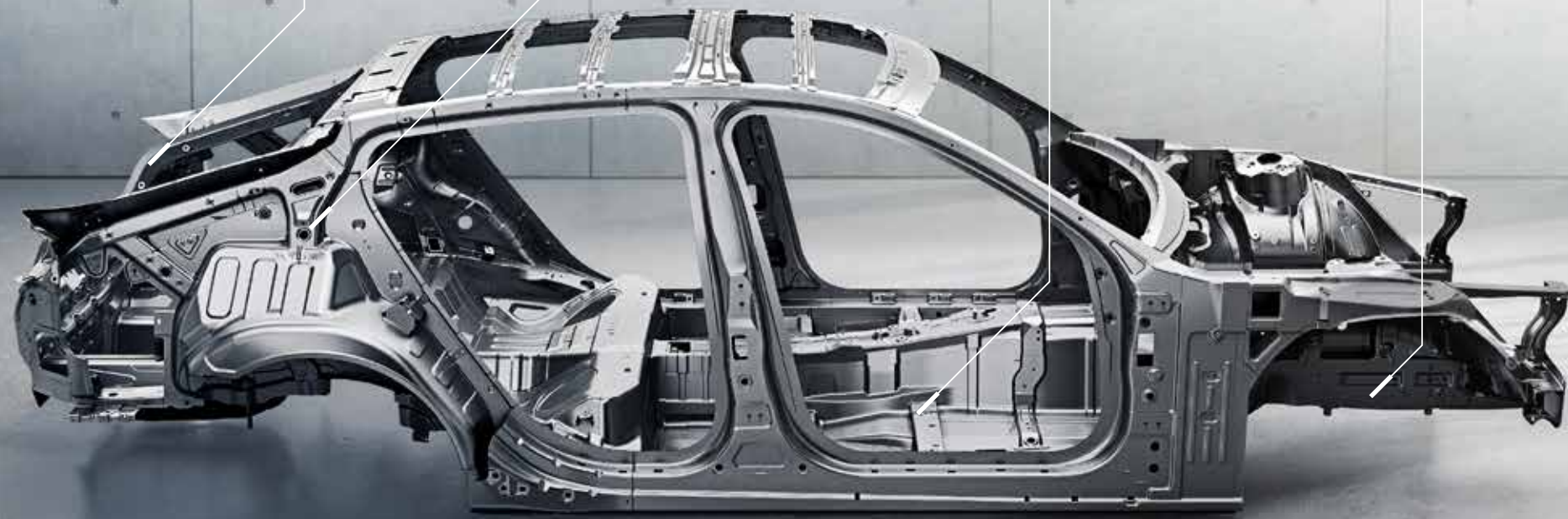
Reinforced quarter panels above the rear wheels now join the body at a higher point for improved stiffness.

► **Stronger Underbody Rail Materials**

The safety cage formed by the seat cross members, longitudinal members and side sill inner panels is greatly reinforced.

► **Stiffer Subframe Panel Joints**

Bulkheads within the subframe side members now join four surfaces instead of three for maximized stiffness.



Phenomenal torsional rigidity and hot-stamped steel

The steel members of the new Stinger body are engineered for substantial torsional rigidity, or resistance to twisting forces, so that bumps and jolts in the road are absorbed with precision, while impact forces during a collision are managed in ways that better protect the occupant space.

21 Hot-stamped components

173 Metres of advanced adhesives

THE SCIENCE OF PROTECTION

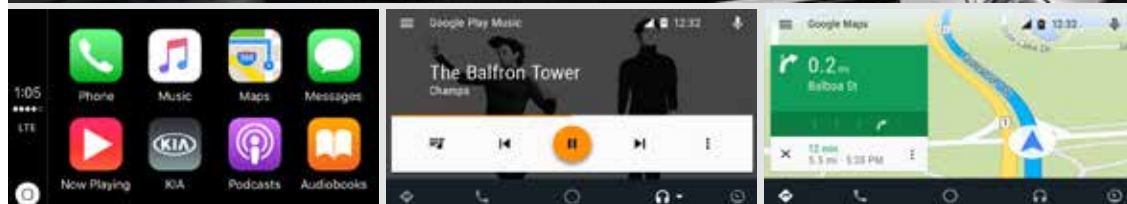
Safety is an integral part of any vehicle's performance, and the Stinger is engineered to prioritize driver and passenger protection above all else. Occupant protection is built into every aspect of the chassis and body, and was taken into account by Kia engineers as they optimized aerodynamics, performance, ride smoothness, and everything else that goes into creating an exceptional vehicle. The result is a thrilling five-door fastback sedan designed to offer an exceptional level of safety.

7 airbags To help protect occupants and potentially reduce injuries in the event of a collision, the Stinger offers driver and front passenger airbags, two front-side airbags, two side-curtain airbags, and a driver's knee airbag as standard.

Knee airbag The driver's knee airbag is designed to minimize impact and injury to the driver's lower extremities in the event of a collision.

Active Hood Lift System (AHLS) AHLS detects imminent impact with a pedestrian then automatically raises the rear edge of the hood to help protect the pedestrian from serious head or upper-body injury in the event of a collision.





Navigation system with 8-inch screen

Refreshingly easy to read and operate, the navigation system presents routes, shortest path options and other vital information on a vivid "floating" 8-inch color LCD touch screen featuring dynamic guidelines that is linked to a rearview camera. The screen also controls a state-of-the-art sound system that can play audio files from connected devices or an SD card.

INFORMATION IN CLEAR SIGHT

Designing the ideal driving experience requires packaging all of today's technologies in a clear, simple and satisfying way. The Stinger boasts a wealth of high-tech driving, safety and entertainment features that did not exist in the old days of gran turismo motoring. Yet the cockpit design is simple and classic, allowing the driver to focus on the road. Optional equipment like the Head-Up Display and floating 8-inch navigation screen convey information in an ingenious yet tasteful way.



Head-Up Display (HUD)

With the customizable Head-Up Display (HUD), key driving information is discretely projected onto the windshield in your line of sight so that you can safely focus on the road ahead. Visible day or night, the height-adjustable display appears to float just in front of the car. Speed, cruise control, audio, turn-by-turn navigation guidance and Blind Spot Detection information are included.



7" supervision cluster Vital vehicle and driving information appear in a larger, more vivid and higher-definition format on the optional 7-inch TFT LCD supervision cluster located between the tachometer and the speedometer. Multi-language support is included.

Wireless smartphone charger Charge a compatible mobile phone wirelessly on the charging pad located at the front of the center console. An orange display indicates charging in progress while green indicates a full charge. You will be alerted when exiting the vehicle if a device is left on the charging pad.

SUBLIME SOPHISTICATION

You spend a lot of time in your car. So why not tailor the Stinger's interior to match your take on the ideal modern gran turismo? The Stinger has a surprisingly long list of impressive standard features, but for the utmost enjoyment, choose from a variety of premium comfort, entertainment and convenience options.



15-SPEAKER Harman/Kardon premium sound

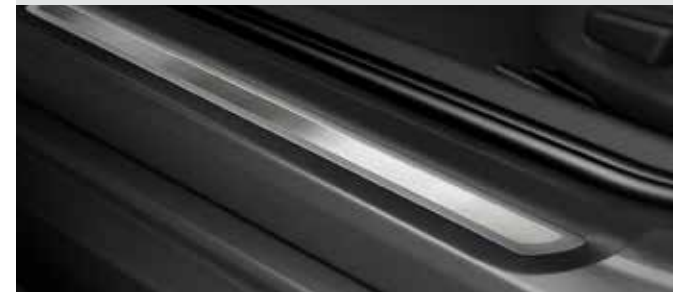
The optional Harman/Kardon sound system includes subwoofers that resonate in hollow parts of the frame and body. Clari-Fi technology enhances digitally compressed music while Active Sound Design augments acceleration, shifting and suspension sounds for an enhanced driving experience.



Paddle shift levers Standard paddle shift levers let you make quick gear changes for the 8-speed automatic transmission without taking your hands off the steering wheel. It's a simple way to access more torque on short notice or choose your own shift points during vigorous driving.



Electronic parking brake (EPB) An electronic parking brake offers quick, secure activation without the effort required by traditional mechanical brake levers. Pull on the EPB switch on the center console to activate the parking brake. Auto Hold mode temporarily maintains the vehicle at a standstill even if the brake pedal is released.



Door scuff To protect the finish of the lower door sill, an attractive door scuff lets you conveniently wipe soiled shoes before getting in. The metallic finish complements similarly finished design elements around the cabin, offering a pleasing visual touch every time the door is opened.



3-zone climate control A standard dual-zone full auto temperature control system along with rear seat climate control gives the driver and all passengers separate controls, allowing people with different climate needs to ride together in comfort.



Integrated Memory System (IMS) The Integrated Memory System saves two presets for driver's seating positions, outside rear-view mirrors, Head-Up Display and cluster display. It's a simple way to keep the Stinger totally personalized, yet flexible enough to make another driver feel at home.



Ventilated front seats Available ventilated front seats provide cool, soothing airflow on hot days, and more effective and thorough heating on cold days. Both the seat cushion and the seatback feature airflow perforations to keep more of the body in a state of comfort.

► Side-bolster adjustment

Optional side-bolster adjustment for the 8-way power driver seat lets you choose a setting that offers maximum support and comfort by twisting the seat controls on the side of the base of the seat.

► 4-way Air Cell Lumbar Support

Optional Air Cell Lumbar Support for the 8-way power driver seat lets you reposition areas of resistance in the seatback, up-and-down and side-to-side, for maximum comfort and support.

► Cushion extension

To help relieve fatigue, an optional thigh extension for the driver moves the front edge of the seat base forward, supporting a larger area of the driver's thighs.



FLUIDITY IN MOTION

The great thing about designing a modern sports sedan is having the opportunity to capture classic style while having a clean slate to apply the latest aerodynamics enhancing and noise reduction technologies. The Stinger is shaped to minimize fuel-consuming drag and maximize stability and control. At the same time, its structure, contours and interior treatments are engineered to isolate passengers from noise and vibrations.



Front-bumper-integrated air curtain & aero fender garnish An air curtain that helps manage airflow, reduce drag and direct cooling air to the radiator is integrated into the front bumper. Lower apertures direct airflow to the wheel wells, helping to cool the brakes. In addition to the fuel savings and noise reduction that accompany reduced drag, the air dam's contours improve driving stability. Meanwhile, the aero fender garnish pays tribute to classic design cues of high-performance sports cars.



Rear integrated diffuser An integrated diffuser panel beneath the rear bumper helps to control airflow leaving the underside of the body, preventing the four exhaust pipes from creating drag under the car. It pays homage to racing diffusers which lower the turbulence that can occur when low-pressure air under the car meets higher pressure ambient air. Longitudinal ridges help provide directional stability.



Lipped trunk lid edge To improve stability and optimize the vortex of potentially turbulent air that forms behind the Stinger when it travels at higher speeds, the trailing edge of the trunk lid features an aerodynamic lip that provides a spoiler effect along with a pleasing aesthetic design detail.



Multiple aerodynamic underbody covers The aerodynamic contours everyone can see in the silhouette and panels of a car are familiar to most people. But just as important to the aerodynamics equation is how air disperses underneath the vehicle, where the components often have complex contours that can result in drag. For this reason, the Stinger uses a system of sturdy underbody covers below the engine and transmission, on each side of the cabin and on each side of the rear suspension. These covers reduce airflow resistance of the underside of the body when travelling at higher speeds.



Noise, vibration & harshness (NVH) Inside and out, new insulation materials abound, and every element of the Stinger has been engineered to raise the standard for a smooth, quiet ride. The engine room and dash get extra insulation while padding quiets joints of the body pillars and frame. The exhaust has been reconfigured, and the rear cross-member stiffened, while side mirrors and doors are sculpted to minimize noise and drag.



ONE SPIRIT THREE FACES

Every Kia Stinger artfully captures the most desired elements of classic motoring in a five-door sports sedan designed to excel in the real world. From the graceful EX, to the invigorating GT Line, to the exhilarating GT, every Stinger offers driving enjoyment, a spacious interior and forward-thinking technology. Exclusive GT Line and GT exterior trim elements, interior options and performance features give these versions an especially unique personality.

DEEPLY PERSONAL ALLURE

The inviting Stinger interior reflects the spirit of the gran turismo concept. Rich, luxurious tones complement the bold exterior colors. Contrast stitching and real aluminum add a refined touch. Choose Nappa leather on the GT, pure leather on the GT Line, and soft, durable artificial leather on the EX.

Black One-tone Interior



EX Standard Artificial Leather EX Optional Pure Leather



GT Line Standard Pure Leather GT Standard Pure Nappa Leather

Center Console Garnish



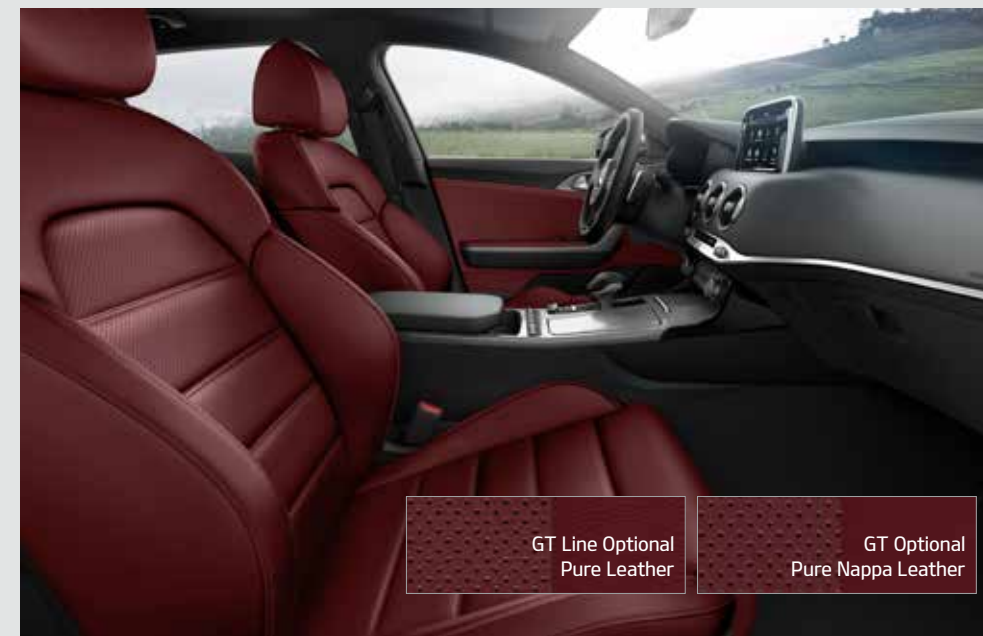
Brushed Aluminum Black High Gloss

Brown One-tone Interior



EX Standard Artificial Leather EX Optional Pure Leather

Red Color Package



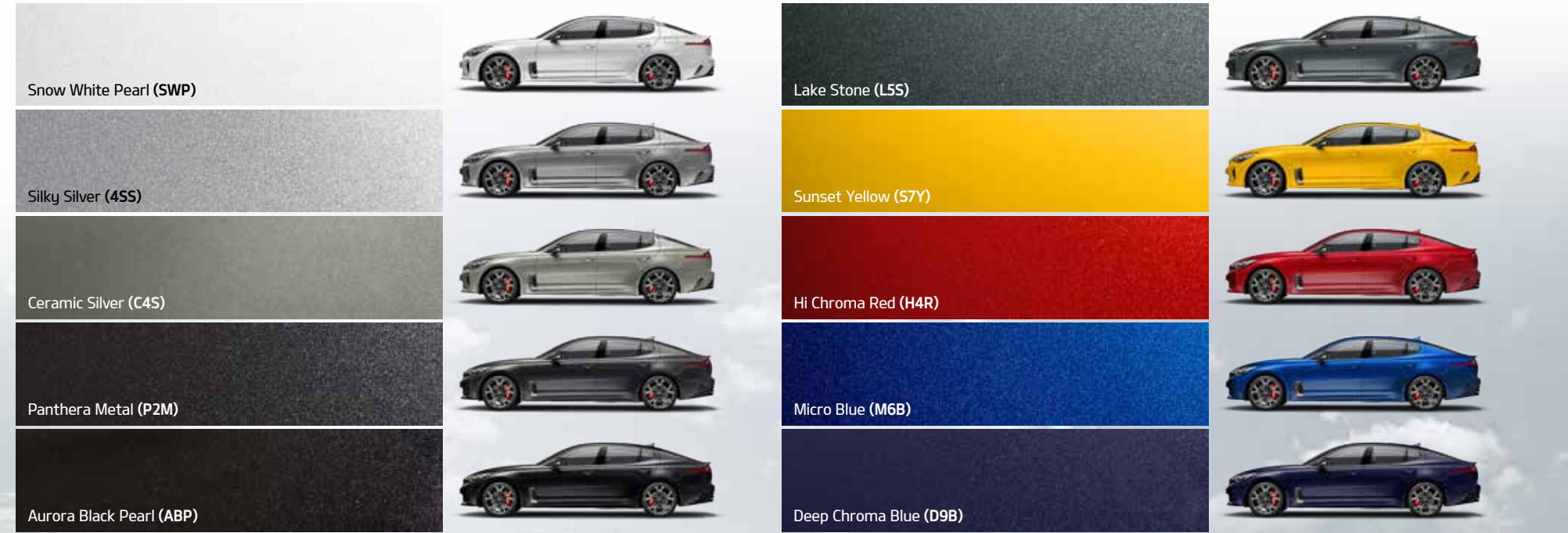
GT Line Optional Pure Leather GT Optional Pure Nappa Leather

Gray Color Package



GT Line Optional Pure Leather GT Optional Pure Nappa Leather

Exterior Body Colors



All information contained herein was based upon the latest available information at the time of printing. Descriptions are believed to be correct, and Kia Motors Corporation makes every effort to ensure accuracy, however accuracy cannot be guaranteed. From time to time, Kia Motors Corporation may need to update or make changes to the vehicle features and other vehicle information reported in this brochure. Some vehicles shown include optional equipment that may not be available in some regions. All video and camera screens shown are simulated. Kia Motors Corporation, by the publication and dissemination of this material, does not create any warranties, either express or implied, to any Kia products. Contact your local Kia dealer for the most current information.

© 2017 Kia Motors Corporation. Reproduction of the contents of this material without the permission of Kia Motors Corporation is prohibited.

Technical Specifications

Engines		Theta II 2.0 T-GDI engine		Lambda 3.3 T-GDI engine		R 2.2 VGT diesel engine	
Displacement	cc	1,998		3,342		2,199	
Max. power	ps/rpm	255 / 6,200		370 / 6,000		200 / 3,800	
Max. torque	kg-m/rpm	36.0 / 1,400-4,000		52.0 / 1,300-4,500		44.5 / 1,750-2,750	
Performance							
0-100 km/h	seconds	6.0		4.9		7.6	
80-120 km/h	seconds	4.4		3.3		5.9	
Top speed	km/h	240		270		230	
Cargo Capacity							
Trunk volume (VDA)	ℓ			406			
Dimensions							
Overall length	mm			4,830			
Overall width	mm			1,870			
Overall height	mm			1,400			
Wheelbase	mm			2,905			
Wheel tread	Front	mm			17": 1,592 / 18": 1,596 / 19": 1,596		
	Rear	mm			17": 1,643 / 18": 1,647 / 19": 1,619		
Head room	Front	mm			974		
	Rear	mm			939		
Leg room	Front	mm			1,083		
	Rear	mm			925		
Shoulder room	Front	mm			1,433		
	Rear	mm			1,391		

